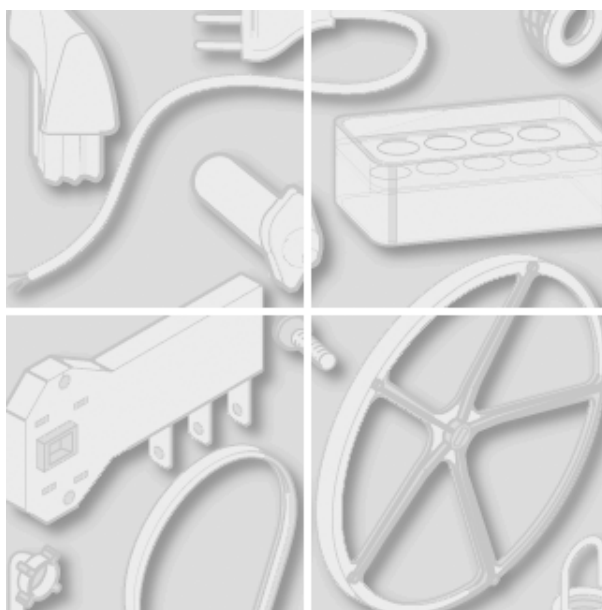


Indesit Company



Model type:

B34

Commercial code:

31134

General notes

Technical Documentation guidelines

You can find herewith some generic information to simplify consulting of technical documentation:

1. Models of same range share the same exploded views, which report the richest set of spare parts:generally, a model does not necessarily have a related spare part for each particular shown on exploded views.
2. Some spare parts can not be represented directly on the exploded views (instruction booklets, specific kit, etc...). You can find those codes in the spare parts list with the same reference of particular where spares are installed or with references 099, 999. Instruction booklets, once managed, appear with 000 reference.
3. On the higher right site of each exploded view there is a serial number which indicates the beginning of the production of certain range:some models might have more than an exploded view for a given category, each distinguished by a different serial no.and linked to another spare parts list, In this case, serial no. is required to supply the right spare part code. Exploded view to be considered is the one with a more recent serial no. but previous than the one of the model that needs assistance.
- 4.Exploded views might require further updates even after publishing. Addition of new spares will go on following the already existing numeration references. Revision number of an exploded view is shown into last four digits of serial number into upper right hand corner.
- 5.The spare parts list associated to an exploded view shows related codes of spares managed for a certain model; for each spare part other informations are available:

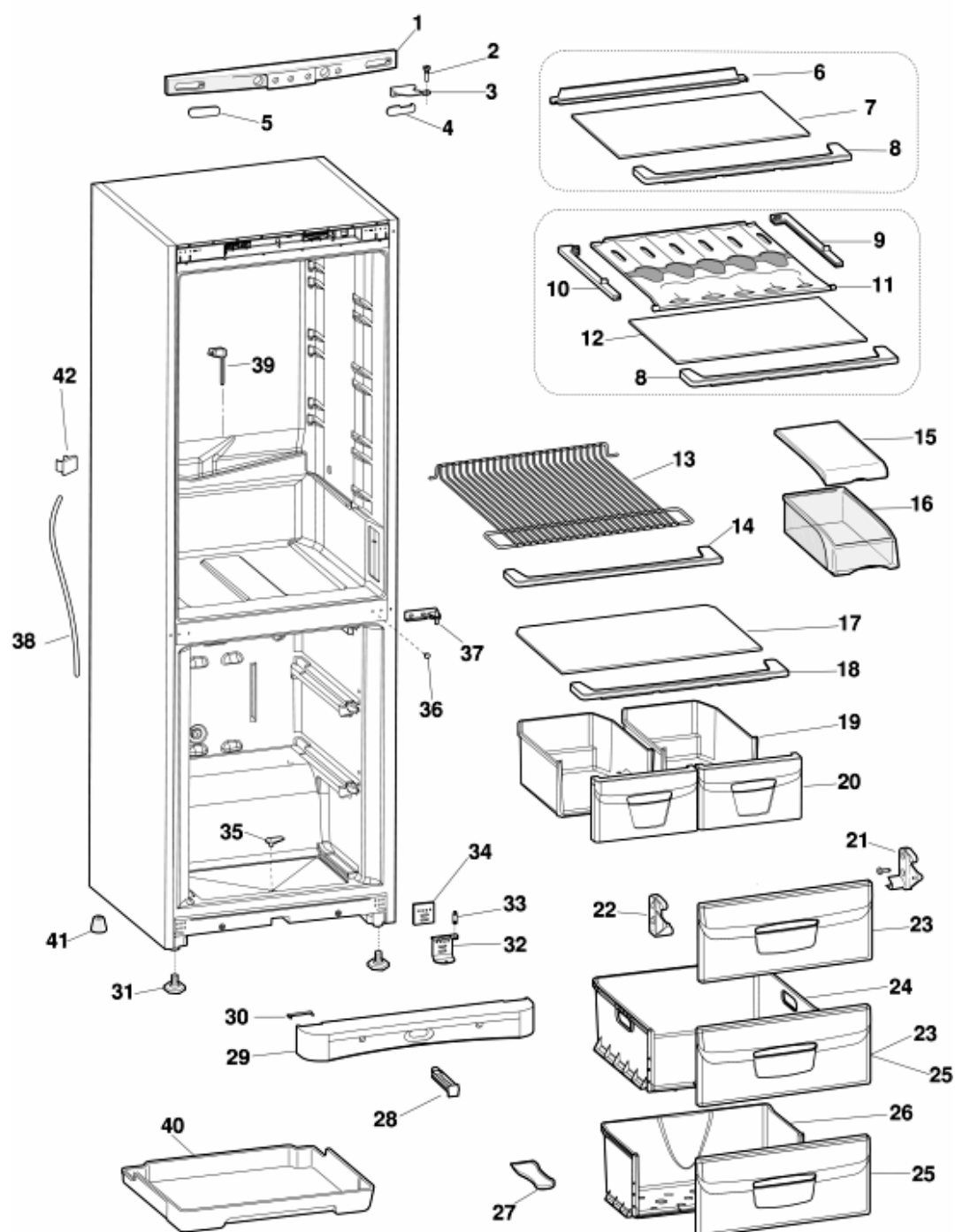
REF: reference no of spare into a table; SUBSTITUTE: list of spare(s) which can replace a code but that keeps same functional characteristics

INDUSTRIAL CODE: list of variables of a model (shown into model label) where such spare is used; NOTICE: code of information(s) to refer to complete technical intervention, track for changes or to find correct spare part code.
6. Some notices, into a same section are generic therefore cannot be directly linked to a spare part. In order to assist a model in the best way as possible, it is helpful to pay attention to all notices and constantly verify documentation updates
- 7.Technical documentation cover shows model name and its commercial codes

51520e0

Exploded views

Matr.30515.0003



51520E0

51520e0

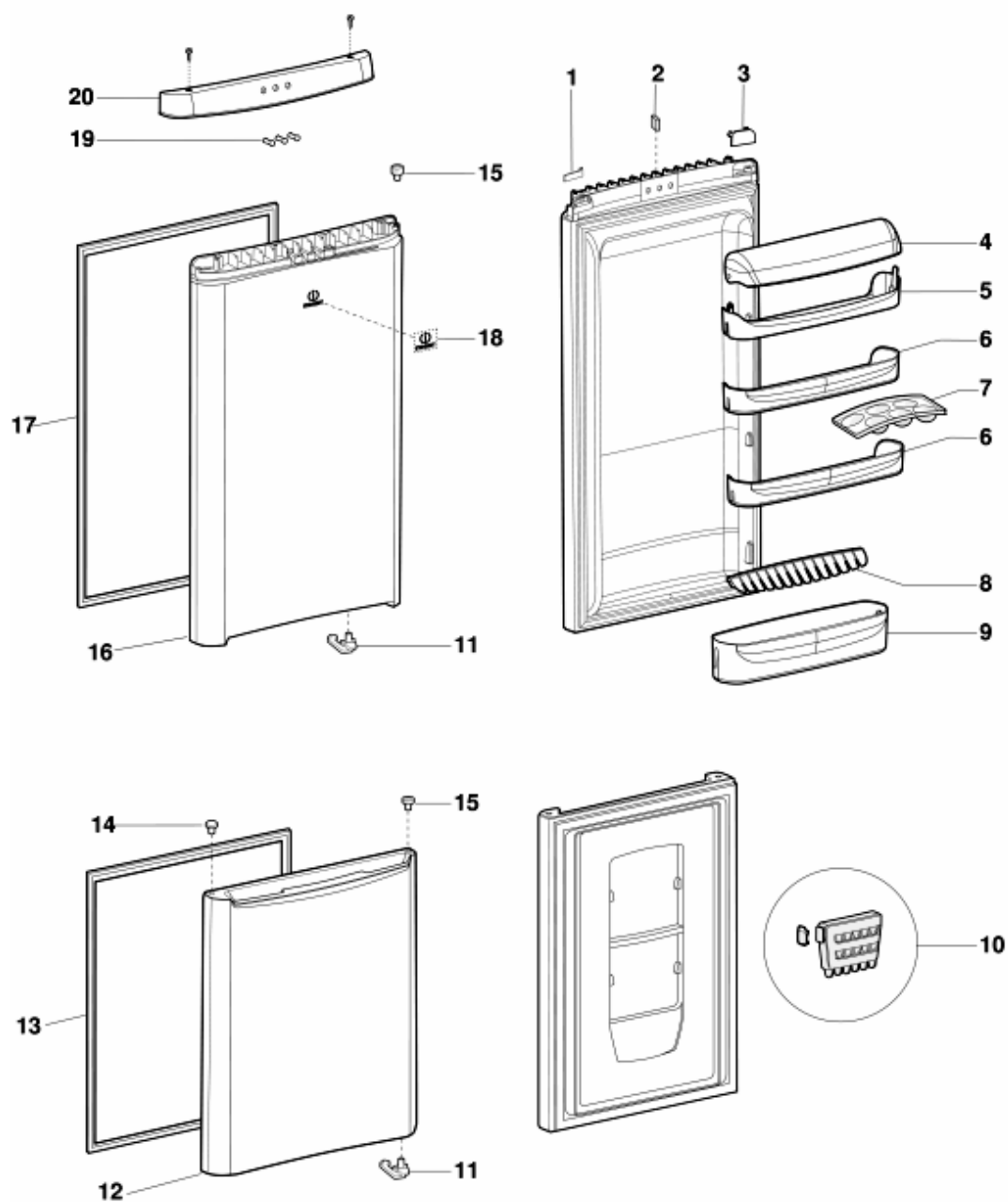
Spare parts list

Ref.	Code	Substitute	Description	Notice	Industrial code
000	C00109838		instruction booklet b34 (i-uk-fr-d-pl-hu		
000	C00109839		instruction booklet b34 (sk-sl-cz-sb-bu-		
001	C00095402	1 x C00115425	control panel-top cover(electr) 596x55wh		
002	C00075565		hinge pin - m8x3 (18+2,5)		
003	C00081644		upper hinge (m8) lh-rh cromed 'indesit-00		
004	C00075561	1 x C00114603	hinge surround (74x20) - white		
005	C00075562	1 x C00114601	blanking plug (74x20) - white		
013	C00084572		fridge wire shelf (529/498x341x30) - white		
014	C00084573		trim 525 mm (wire shelf) - white		
015	C00048475	1 x C00114786	meat box cover - white (giugiario)'232x278		
016	C00095179		meat holder blue 237x297x98 giugiario		
017	C00094920		crisper cover (499x344x4 2x450)		
018	C00094432		trim - glass crisper cover 528x89x15white		
019	C00075590	2 x C00096115	crisper box (wxhxd 246x137x354) - white		
020	C00094433		panel crisper box wxh 246x160 light blue		
023	C00094718		panel drawer - wxh 440x197 (light blue)		
024	C00075593		middle drawer -(wxdxh 440x406x160) -		
025	C00094439		panel drawer - wxh 440x197 (light blue)		
026	C00075594		lower drawer - white wxdxh 440x242x160		
027	C00003261		ice scraper - white		
028	C00094932	1 x C00114780	drain white 118x30 (indesit3)		
029	C00094933	1 x C00115779	front base moulding indesit3 -wh kit		
030	C00094381	1 x C00114621	white base cap 58x18x4mm		
031	C00053419		foot 17,7x37,5 adjustable		
032	C00076614		lower hinge assy(m6) rh-lh - chromed		
033	C00017658		hinge pin m6x13,5		
034	C00075566		packing - lower hinge 30x40 (6 holes)		
035	C00031177		plug - drain hole 10,5mm - white		
036	C00011286	1 x C00114785	blanking plug d4,5x8mm - white		
037	C00053478	1 x C00114624	central hinge - white 'df245x bom. compe		
038	C00031183		defrost water hose d.9,5x110 cm		
039	C00045965		cleaner/plug 6x120-defrost hole'ind.00'		

51521e0

Exploded views

Matr. 30415.0001



51521E0

51521e0

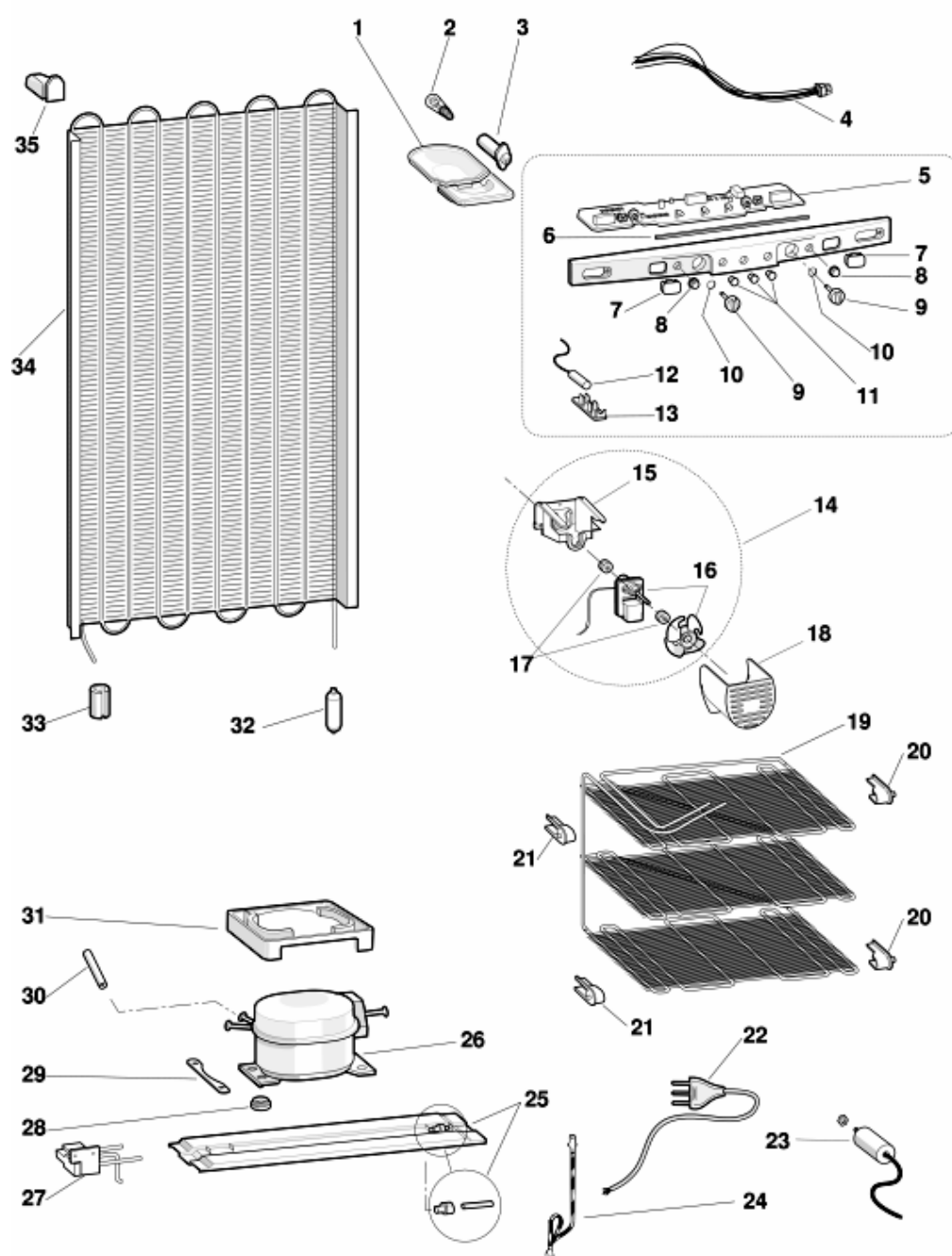
Spare parts list

Ref.	Code	Substitute	Description	Notice	Industrial code
002	C00075612		magnetic switch (door stop) 15x10x5		
003	C00081839	1 x C00114649	hinge surround lh 66x27 - white upper doo		
004	C00094417		eggs compart. door blue 486x66(indesit)		
005	C00094416		shelf eggs wxh 486x64x112 (light blue		
006	C00094415		central shelf wxh 486x6x112 (light blue		
007	C00076539	1 x C00114690	eggs tray (6) - white		
008	C00081955	1 x C00114685	shelf trim rail (423x39) white		
009	C00094410		bottle shelf 486x104x135 light blue		
010	C00075560		ice cubes container (indesit00)		
011	C00082900	1 x C00114650	door stop bush lh - white 49ø		
011	C00082901	1 x C00114651	door stop bush rh - white 49ø		
012	C00094367	1 x C00115485	freezer door assy 592x713x87 white		
013	C00075531	1 x C00115566	freezer door gasket (554x682) white		
014	C00045903	1 x C00114784	blanking plug (h.14 d.13,8/9,5) - white		
015	C00021257		door bush 3mm - white		
015	C00022161		hinge bush 4x15 mm - white		
016	C00094738	1 x C00115471	fridge door 592x1137x103- white pilot		
017	C00076126	1 x C00115396	freezer door gasket (554x1051) white		
018	C00094380		logo indesit chromed		
019	C00094386	1 x C00115501	indicator light white(indesit-03)		
020	C00095403	1 x C00115417	control cover (door top) 593x54- white		

51522c0

Exploded views

Matr. 10215.0002



51522C0

51522c0

Spare parts list

Ref.	Code	Substitute	Description	Notice	Industrial code
001	C00054000		lamp box		
002	C00006522		lamp bulb 15w (e14)		
002	C00091912		light deflection folio (50x100)		
003	C00031233		lamp-socket (libero 1061) 250v e14		
005	C00075606		card micropr. (magnetek 4060/white) 240/5		
006	C00094202		sponge(350x8x8)		
008	C00059919	1 x C00115574	buttons cover white (h=5,5 mm)		
009	C00175020	1 x C00115431	trimmer knob white		
010	C00064775		gasket oring dia=11/8 mm		
011	C00059921		lens (indicator light)		
013	C00075633		plate clamp probe		
019	C00075614		freezer evaporator electrov. 417x419 r134		
020	C00075596		evap.fixing plastic right		
021	C00075597		evap.fixing plastic left(tos)		
022	C00008598		mains supply cable 3x0,75		
022	C00094418		stop mains supply cable		
025	C00013997		mounting channel 586mm - compressor		
026	C00082370		compr. tecumseh tw1374ys 220-240/50		
027	C00078982	1 x C00078984	electrov.3-way bitron510 240/50 r134-r600		
028	C00032453		rubber shock absorber - compressor		
029	C00008471		fixing plate - compressor (750908)		
030	C00042354		charging pipe 6x120 mm r134a		
030	C00064584		charging pipe 6x120 mm r134a 'tecumseh'		
031	C00054788		defrost water tray - (plastic) danfoss nl		
032	C00078983		filter gr.12 (d.4,8/d.3,2 mm) gas r134a		
033	C00037341		anti vibration rubber bush (27x20mm)		
034	C00099575		condensator imat 586x1200'c240'		
035	C00015332		spacer - condenser		

Notices

n1025093: Doors / weather stripping combined fridges / freezers Indesit/2000 Melano and Setubal

With the exception of the model R45, width 700 mm produced in Turkey (Manisa), on all the combined fridge and freezer models in the Indesit (range 2000), width 600 mm produced in Italy (Melano) and in Portugal (Setubal), Poland (Lodowek) the doors handled as replacement are without weather stripping because this is no longer blocked between door and counter-door. The weather stripping has a new profile and is located in the housing resulting along the external perimeter of the counter-door, where it is threaded through by simple hand pressure. To remove the weather stripping it will suffice to unthread it from its housing without any other operation.

Therefore in case of replacement of the door the weather stripping may be recovered from the existing door, however the weather strips are handled singularly as a spare part.

n1030020: Replacement of NTC sensors on latest generation of "cold product line" models

(KRF 310VE - KRF330VE - KRF310VNFE - KRF330VNFE), including the new combo appliances in the Indesit-2000 range (C238 e C240), Ariston-2001 (MBA3831-4031- 4231 ; MBA3841 - 4041) on static or no-frost "cold product line" models of the latest generation electronic version, the NTC sensors cannot be replaced because they are blocked within the cabinet. This decision is due to the low faultiness of the component and to the high guarantees of operation in foam-insulated environments.

The exceptions to the aforementioned are the upright Ariston electronic 600 mm wide freezers, rounded aesthetics, Ariston models EUP300XEU - EUP350XEU - TUP300XOM (including deriving versions) where the sensor can still be replaced in the event of a fault.

Where the replacement of the product is deemed necessary by the probe defect, then it is important to closely check that the problem is determined by the probe and not by the electronic card.

In order to check the correct operation of the probe it is possible to measure the resistance of the wiring harness terminals that must present the following values :

- temperature of + 20 °C = about 2.000 ohm (air probe at environment temperature)
- temperature of + 5 °C = about 7.000 ohm (fridge air probe)
- temperature of - 18 °C = about 23.000 ohm (freezer air probe)

Also, in a less technical manner, replacing each probe on the electronic card (at room temperature) in a "steering" manner, checking the elimination of the problem (if the compressor starts the probe is defective).

N.B. the probes are identifiable by their coloration (marking) placed on the probe and its wiring harness :

- fridge evaporator probe (black marking)
- fridge air probe (brown marking)
- freezer air probe (white marking)
- freezer evaporator probe (no-frost) end of defrost (light blue marking).

n1030034: Magnetic switch on combined electronics Ariston-Indesit range - 2000

On combined electronic models (Ariston and Indesit, range 2000) on the base of the door's dashboard of refrigerator, there is a magnetic switch assembled (075612) with a rectangular shape that must be inserted on the appropriate hole in the narrow side (the position is compulsory for the stop and the correct function of the product).

The missing of the magnetic switch can cause the following inconvenient with open or closed door:

-If the product has being lit for more than 3 minutes and if magnet is missing, the lamp flashes (if is not broken) as soon as the door opens.

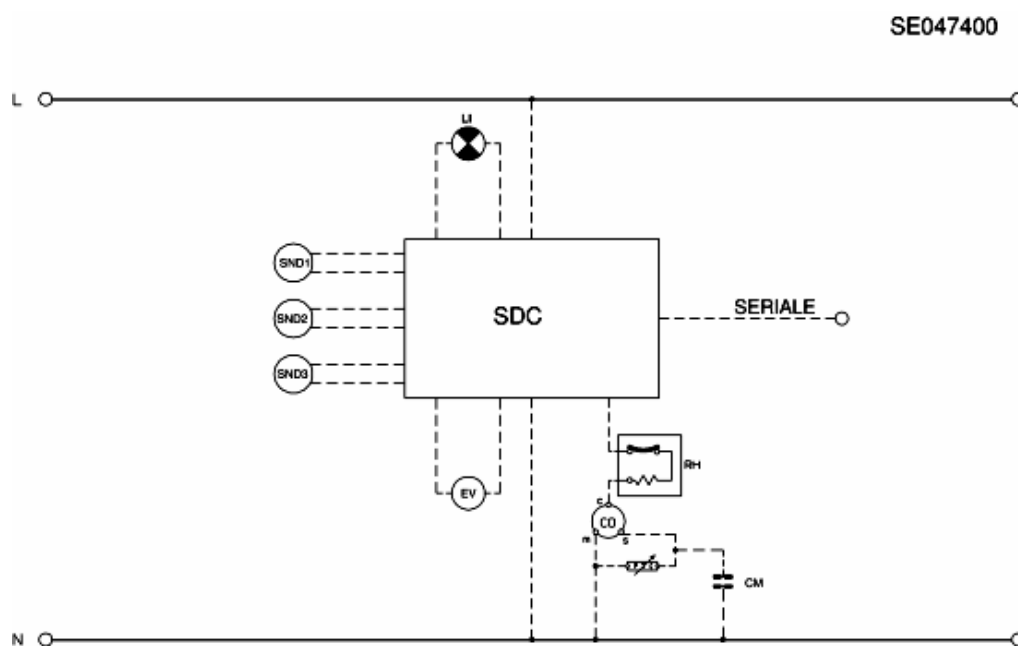
So, in case of substitution of the fridge door, to avoid this inconvenient, together with the dashboard and the moulding, the magnetic switch must always be rescued.

From the end of July the production Dpt. will supply as spare parts the fridge doors of combined electronics, already included with the magnetic switch.

(Anyway please verify always its presence).

Electric schemes and links

Cod. se047400



Legend

Legend: se047400

BZ	Audio freezer alarm	PTC	PTC relay
C	Surge Capacitor	R	Heating resistance
CM	Running capacitor	RA	Ammetrical relay
CO	Compressor	RAN	Heating element condensation
EV	Electrovalve	RFZ	Heating element condensation freezer
FA	Radio anti-trouble filter	RH	Thermal relay
IDS	Schackler with warning	RS	Defrosting resistance
IEC	ON OFF loads switch	RS1	No frost evaporator resistance
IEFR	ON OFF refrigerator switch	RS2	No frost drip pan resistance
IETH	Thermostat exclusion	RS3	Defrosting resistance
ILFR	Push-button for fridge lamp/fan	RS4	Defrosting resistance
ILFZ	Push-button for freezer lamp/fan	RTA	Thermo actuator defrosting resistance
ILI	Lamp switch	SA	Allarm warning
IP	Door switch	SC	Freezing warning
IR	Line switch	SDC	CONTROL CARD DIAGRAM
ISC	Warning light-freezing switch	SL	Line warning
IV	Fan-motor switch	SND1	SONDE VERDAMPFER KUEHLSCHRANK
IVFZ	Freezer fan-motor switch	SND2	SONDELUFTE FREEZER
L	Line	SND3	AIR-PROBE REFRIGERATOR
LFR	Fridge lamp	SND4	Sonda evaporator freezer
LFZ	Freezer lamp	SND5	SONDA ARIA FREEZER VANO
LI	Lighting lamp	TA1	Open thermo actuator
M	Mass/Eart symbol	TA2	Closed thermo actuator
MO	Terminal board	TC	Turbocooling
MT	Timer motor	TF	Fuse-thermic
MV	Fan motor	THA	Allarm thermostat
MVC	Compressor fan motor	THC	Freezer thermostat
MVCO	Compressor compartment fan	THDF	Refrigerator shackler thermostat
MVFR	Fan motor fridge	THI	Thermostat switch
MVFZ	Fan motor freezer	THR	Adjustable thermostat
N	Neutral	TP	Thermoprotector