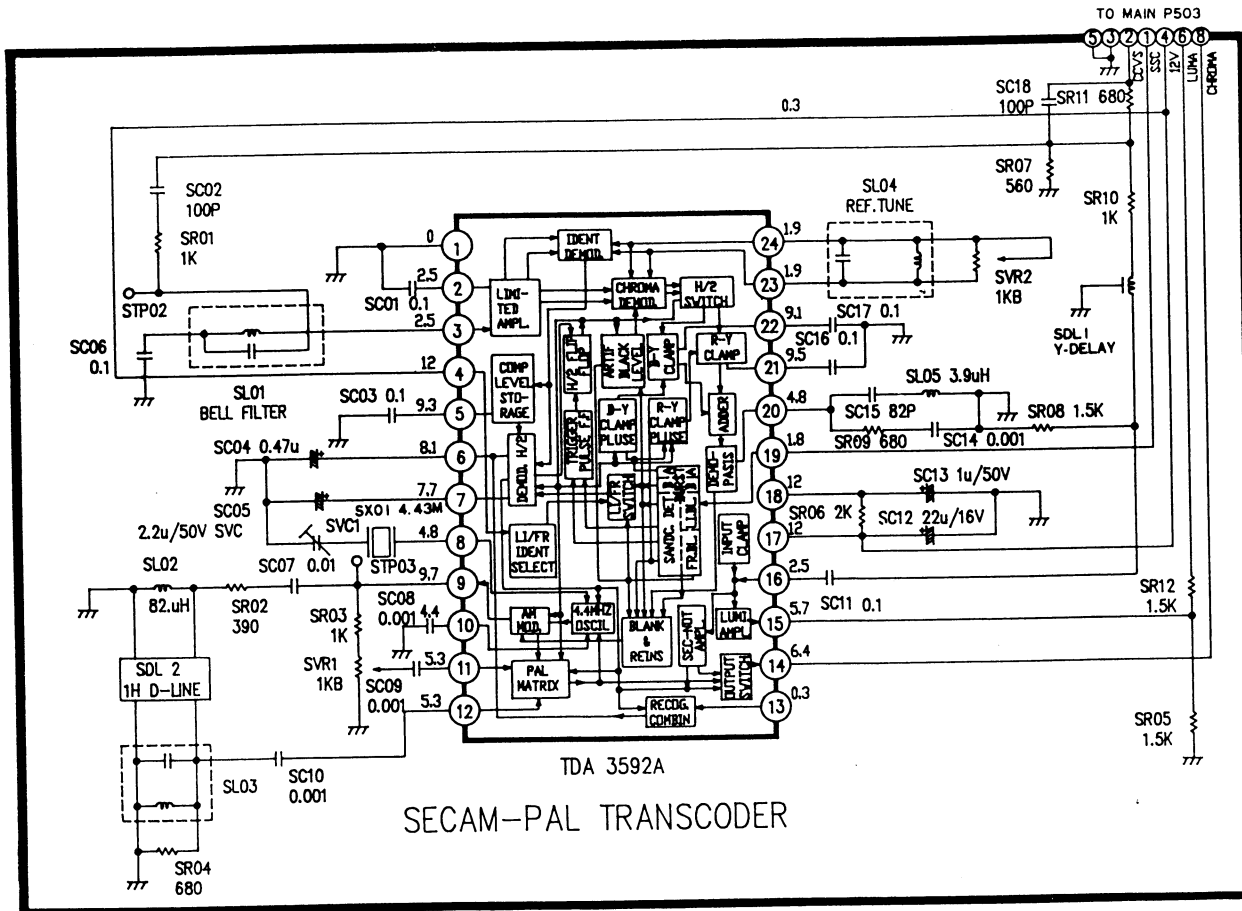
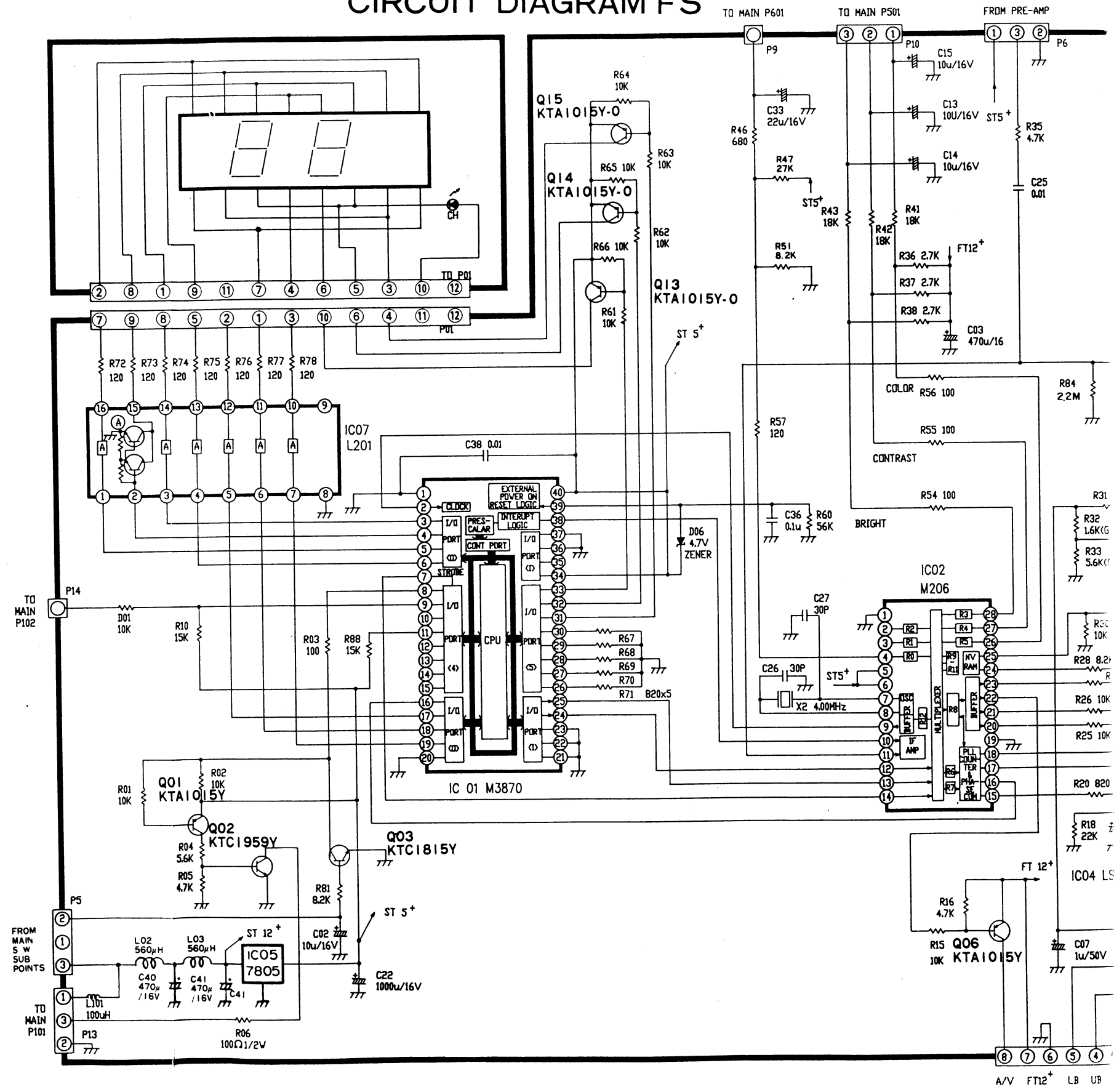
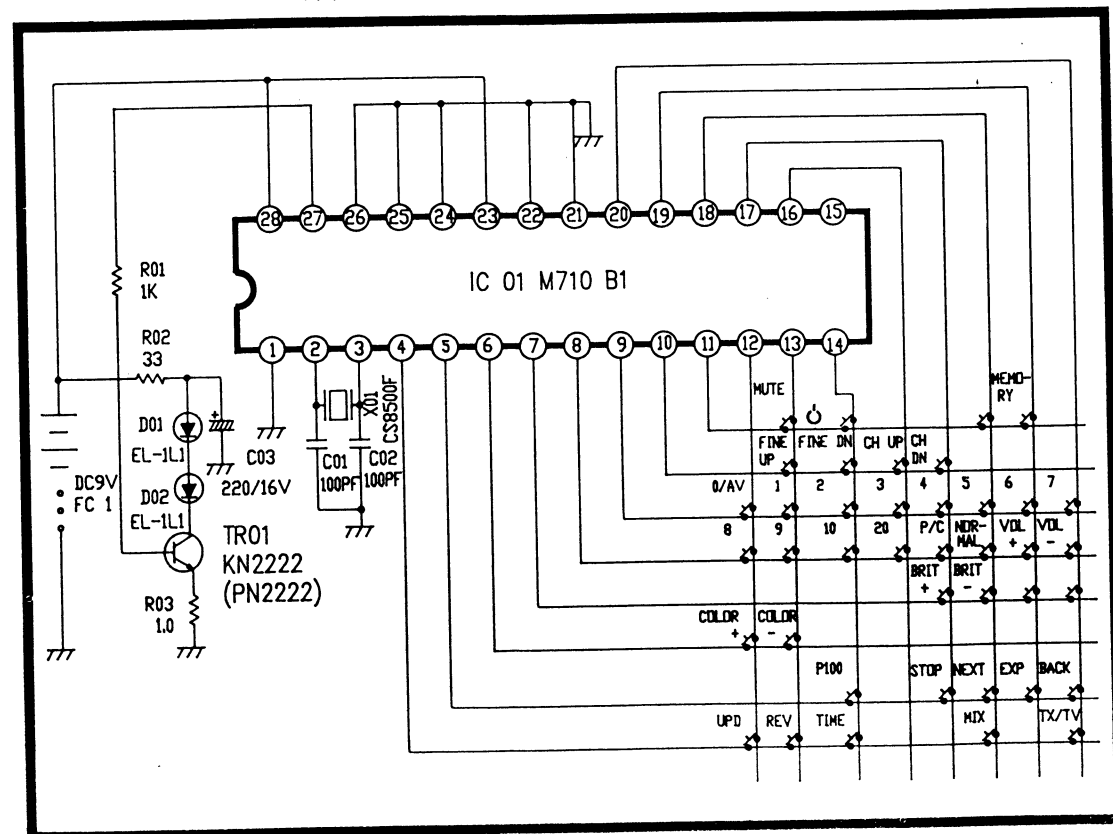


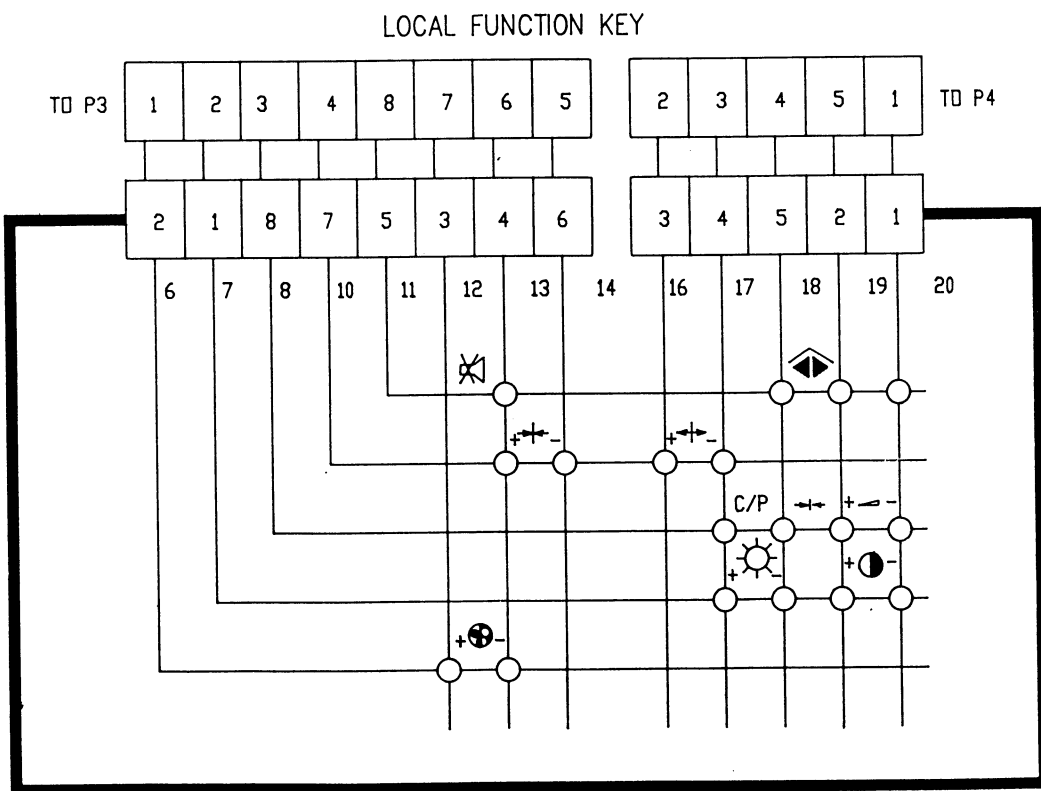
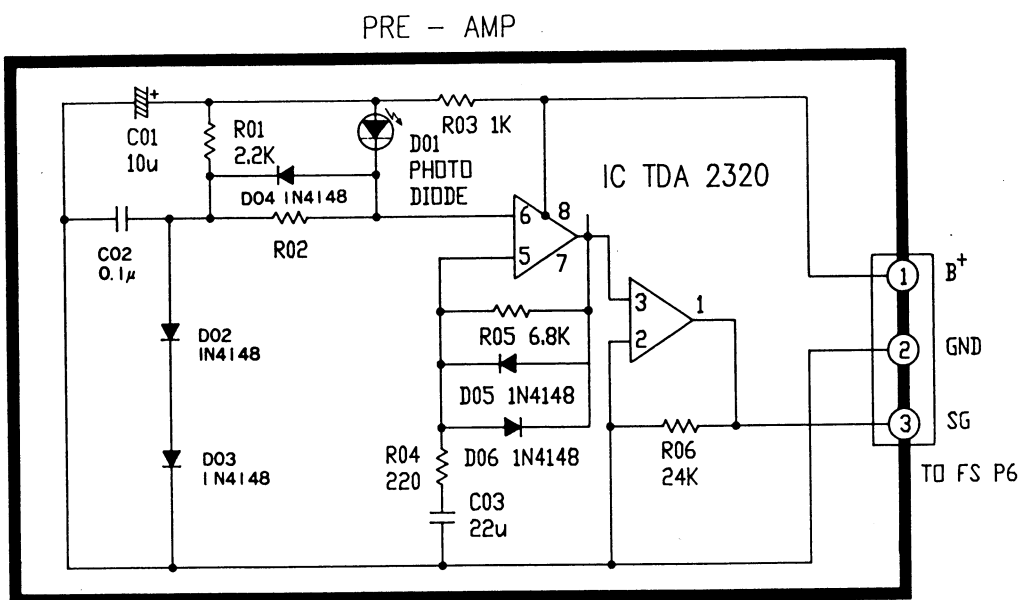
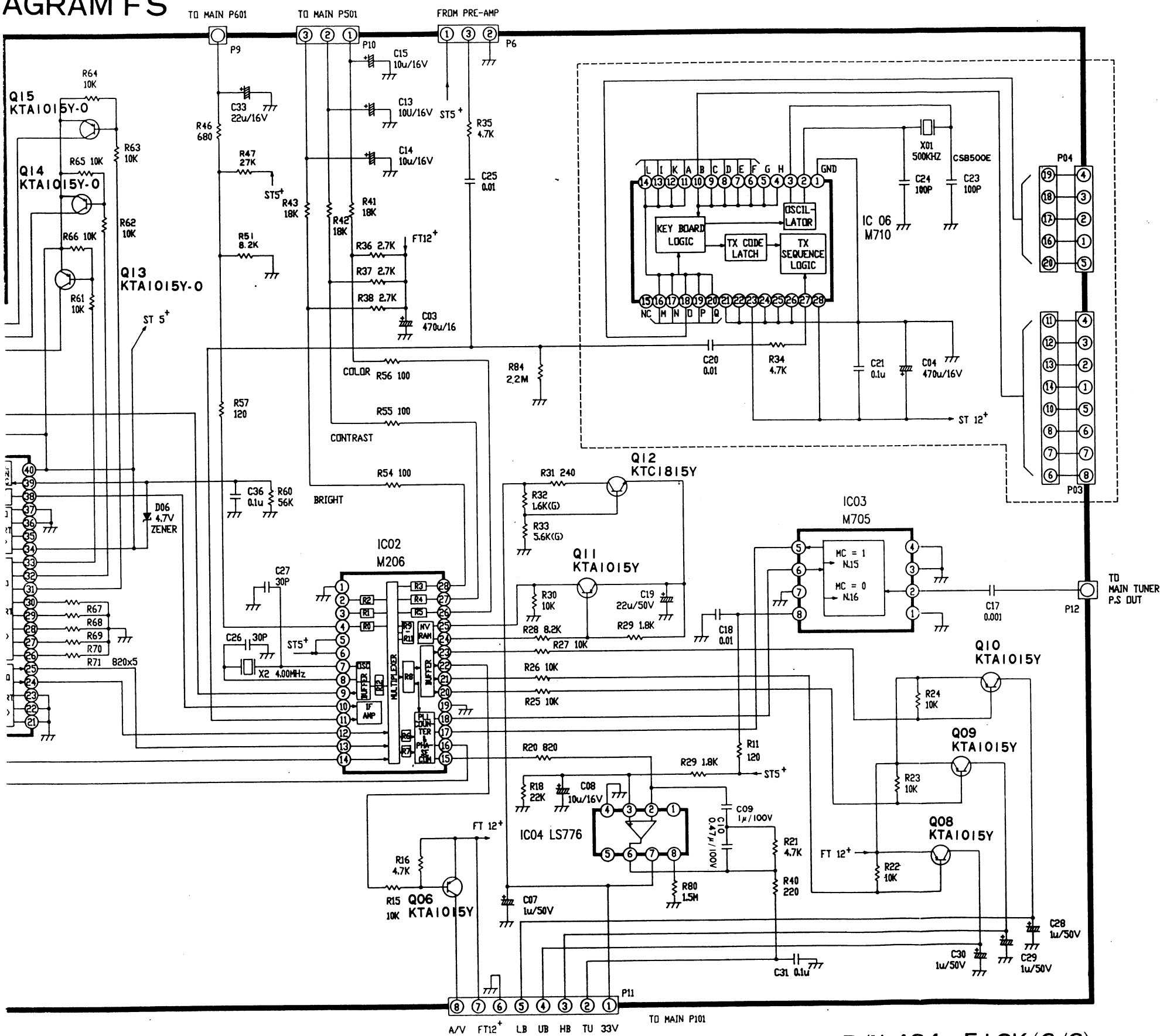
CIRCUIT DIAGRAM FS



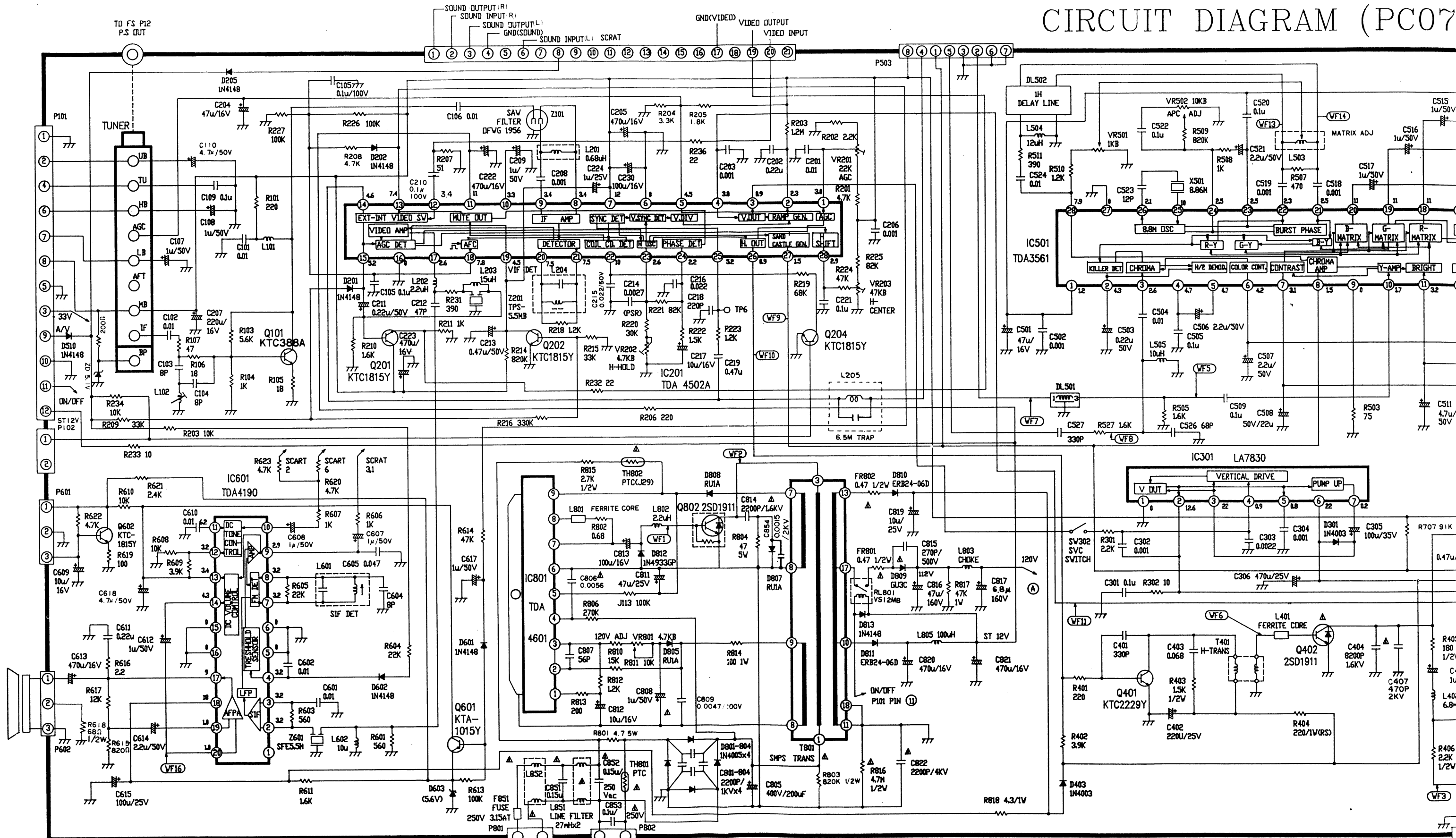
TX SCHEMATIC DIAGRAM



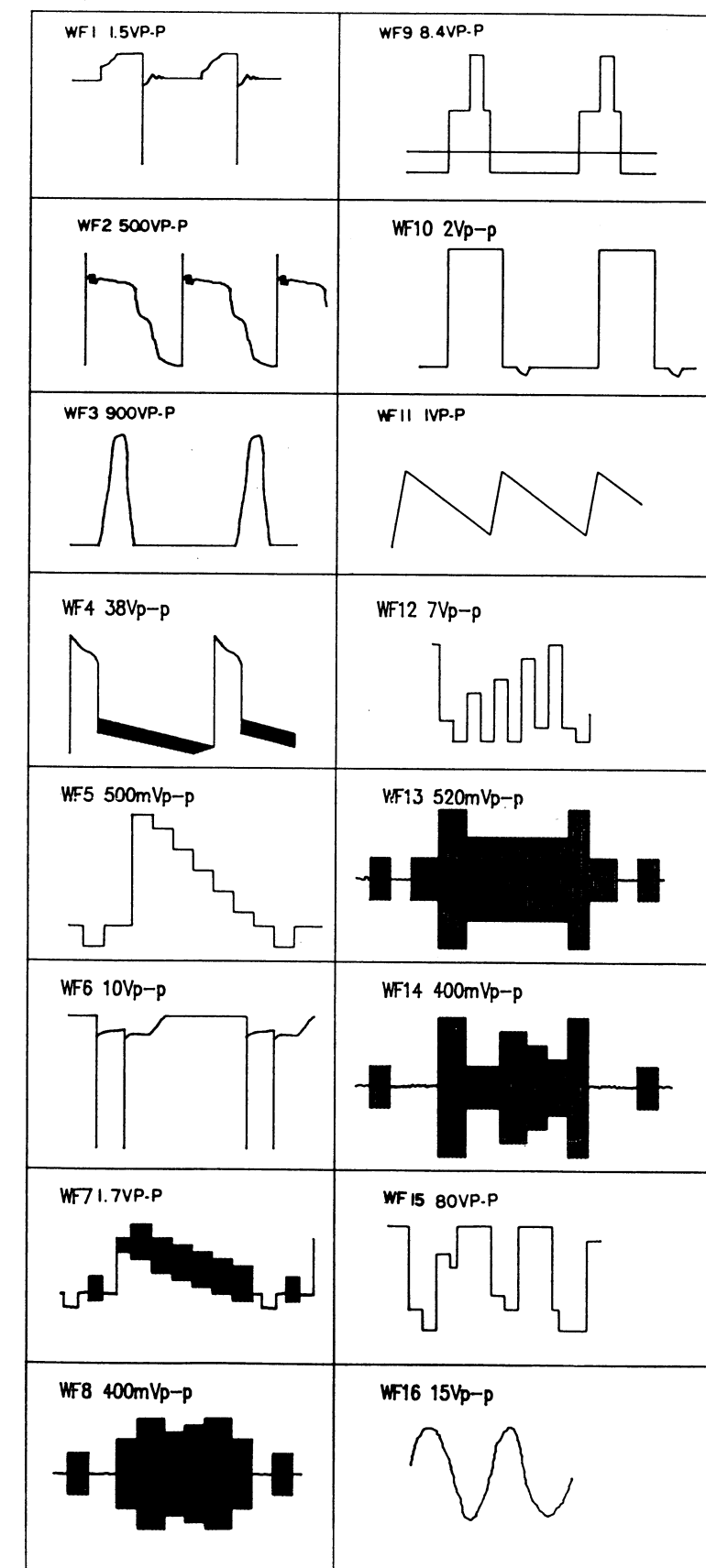
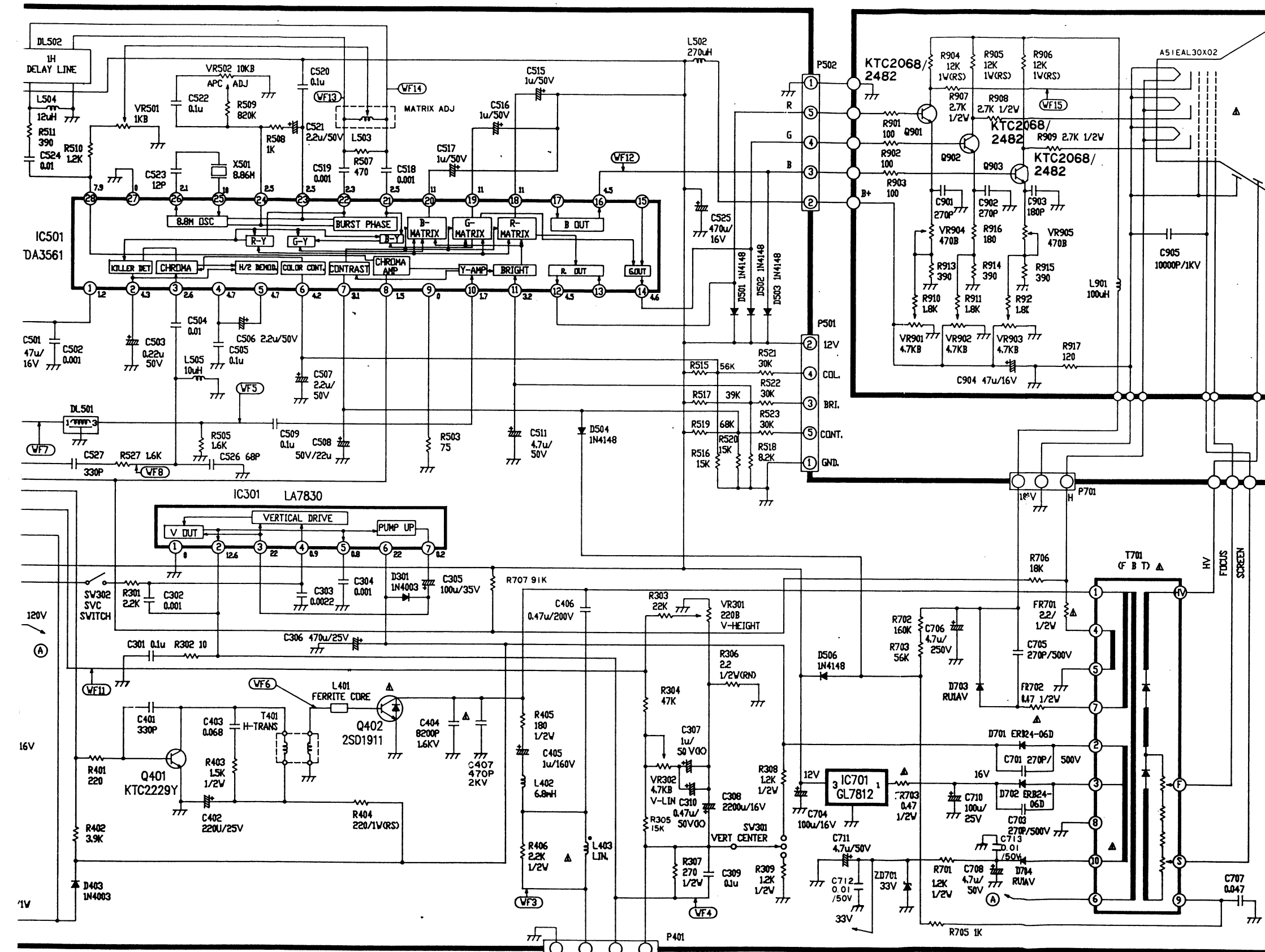
AGRAM FS



CIRCUIT DIAGRAM (PC07)



CIRCUIT DIAGRAM (PC07X2,DDR)



CBT-2172E
P/N 484-513K(1/2)

INDUCTOR

OBSERVATION OF VOLTAGES AND WAVEFORMS

less than 1

more than 1 are

1. Voltages read with VTVM from point shown to chassis ground, line voltage 180-270V volts, colour bar signal.
2. Voltages reading may vary $\pm 20\%$
3. The schematic shown is representative only.
4. All waveforms are taken using a wide band oscilloscope and a low capacity probe.

5. Check FINE TUNING, AGC, BRIGHTNESS, CONTRAST and COLOUR controls for best picture, make sure that CONTRAST and COLOUR controls are in mid position and BRIGHTNESS control is almost in maximum position.
6. Waveforms are taken using a standard colour bar signal.