

### Measurements °C

Bx1	Max	17,9
	Min	16,6
	Average	17,2
Sp1		17,8
Sp2		16,8

### Parameters

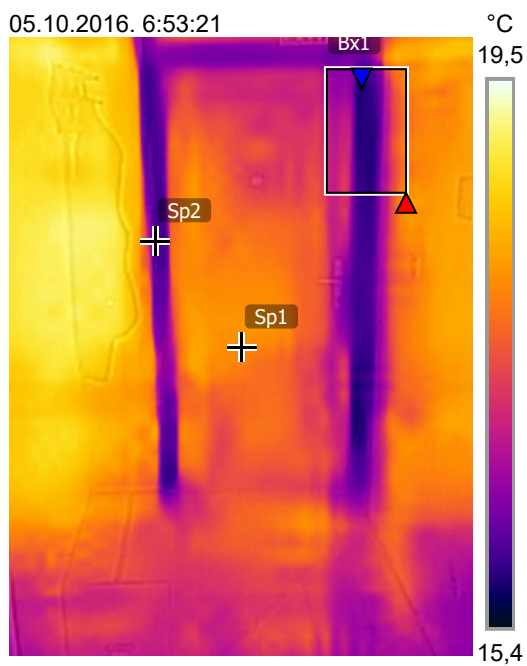
Emissivity	0.9
Refl. temp.	25 °C

### Geolocation

Location	N 43° 30' 27.60", E 16° 28' 39.30"
----------	------------------------------------

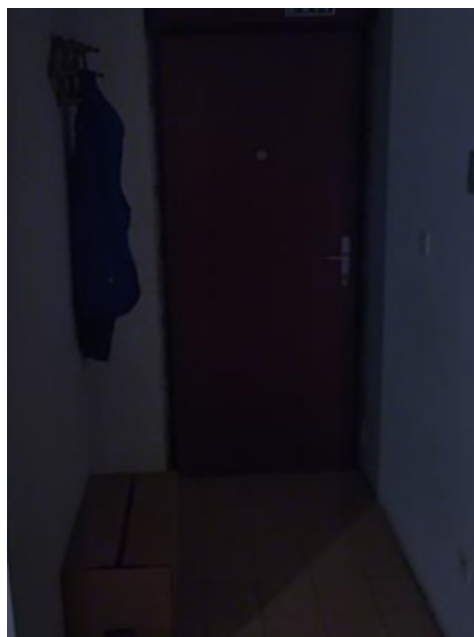
<http://maps.google.com?z=17&t=k&q=43.5077,16.4776>

05.10.2016. 6:53:21



flir\_20161005...

05.10.2016. 6:53:21



flir\_20161005...